

PathFinders

All Children Matter

PathFinders Limited
2017 Annual Report



Photo credits: www.iuliabroad.com

PathFinders ensures that the most vulnerable children in Hong Kong, and their migrant mothers, are respected and protected. We work to ensure that every child has a fair start in life. PathFinders Limited is incorporated in Hong Kong CR No. 1289039 and is an approved charitable institution under s88 of the Inland Revenue Ordinance, file no. 91/10272. PathFinders is listed on WiseGiving and is an organisation in Special Consultative Status with the United Nations Economic and Social Council since August 2017.

INTRODUCTION

Incorporated: 2008

Registration Type: Company Limited by Guarantee

Registration Number on Certificate: 1289039

Tax Status: Inland Revenue Ordinance Registered Charity IRD NO. 91/10272 with s88 tax exempt charitable status

Address: 11C, Worldwide Centre, 123 Tung Chau Street, Tai Kok Tsui, Kowloon, Hong Kong

Telephone: +852 5500 5486

Fax: +852 2393 2422

Email: info@pathfinders.org.hk

Website: www.pathfinders.org.hk

Facebook: www.facebook.com/pathfindershk/

Instagram: www.instagram.com/pathfindershk/

Service centres: One service centre, plus one shelter for clients

Staff: 23

CORPORATE GOVERNANCE

Mission & Objectives: PathFinders works to ensure that the most vulnerable children born in Hong Kong, and their migrant mothers, are respected and protected. At PathFinders, we believe that every child born deserves a fair start in life.

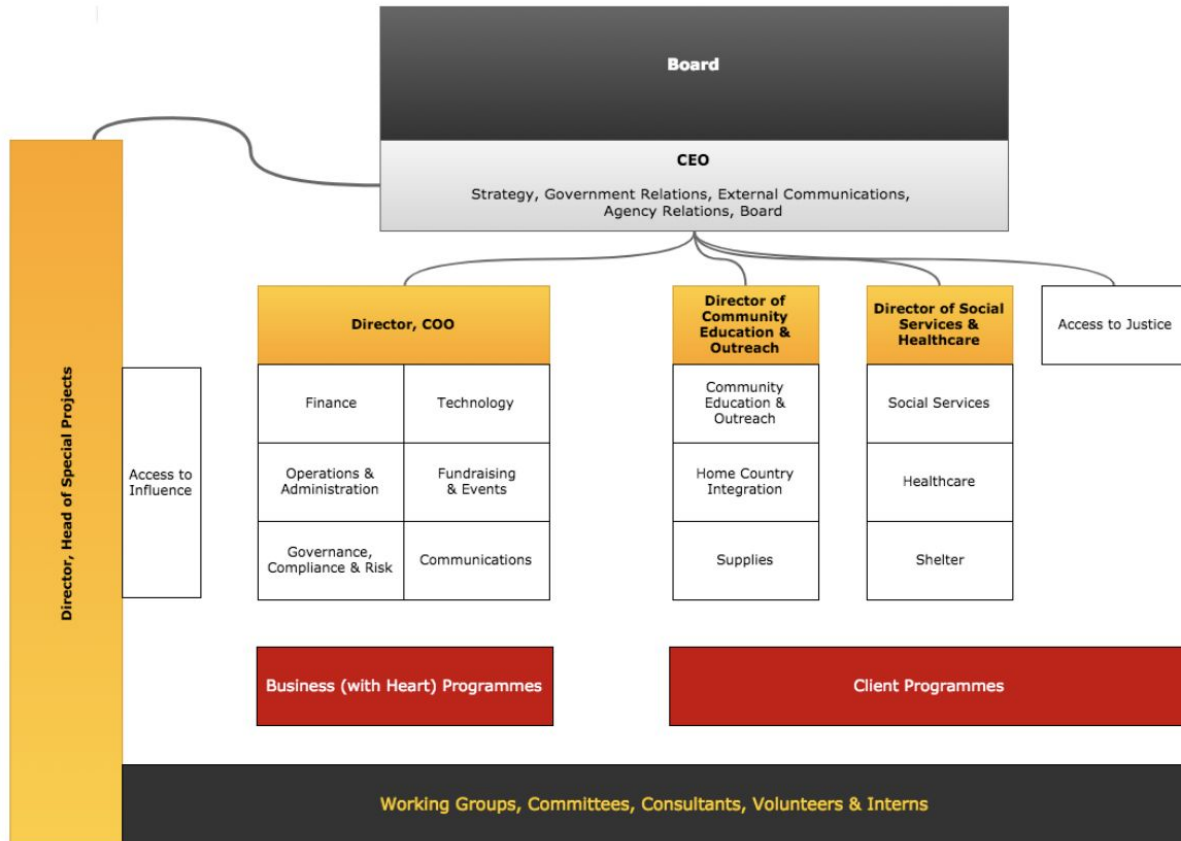
Vision: For all children to be respected and protected.

Board Chair: Vivien Webb Wong. Vivien is Head of Sales for Private Wealth Management Asia for Hong Kong and China markets in Morgan Stanley. She has over 30 years of private banking career experience. Vivien holds an MBA from Cass Business School, City, University of London and a BSc (Hons) degree from the University of Manchester Institute of Science and Technology. Vivien is the Board Chair of PathFinders since 2017, co-chairs the Asia Diversity Council and the Hong Kong Women's Business Alliance of Morgan Stanley. In addition to promoting diversity in the workplace, Vivien is also enthusiastic in music; she is a member of the board of "More Than Musical", which aims to make opera more accessible to Hong Kong's communities.

Other Board Members during 2017, some of whom retired: Judy Chan, Lara Melissa Fabregas Lynch, Kestity Adyandini Pringgoharjono, Martine Vanasse, Meena Datwani, Kelly Creel Gave, Poh Lee Tan, Jennifer Walke Meehan. For details of retirement dates, please see page 1 of our 2017 Audited Reports & Financial Statements: http://www.pathfinders.org.hk/public/wp-content/uploads/PathFinders_AuditedFinancialStatements_2017-2.pdf

NGO Head: Kay McArdle, Chief Executive Officer.

STRUCTURE



MAJOR ACTIVITIES

Report from Head of Organisation:

In 2007, PathFinders' co-founders discovered two babies and their mothers living in notorious Chungking Mansions in extreme poverty and danger. The mothers were former foreign domestic migrant workers who had lost their jobs upon becoming pregnant. No one would help them. No one knew how to. It was all too difficult. And so PathFinders was born, and then incorporated in 2008.

PathFinders entered its 10th year of operations and through end 2017 date helped over 5,200 of Hong Kong's most vulnerable babies, children and ethnic minority, migrant women including over 2,300 children and babies, of whom over 160 would, but for PathFinders, have been at significant risk of abuse, neglect and/or trafficking. In 2017, we provided support to 1,067 beneficiaries, handled 86 legal matters, provided 763 healthcare appointments (up 15% on 2016), helped 128 babies acquire birth certificates, led education classes for 1,034 people, assisted 37 families to return to the mother's home country and recycled clothing and supplies that helped close to 500 people.

Over the past 10 years, we have reached out to over 45,000 individuals in the general public and have educated

PathFinders ensures that the most vulnerable children in Hong Kong, and their migrant mothers, are respected and protected. We work to ensure that every child has a fair start in life. PathFinders Limited is incorporated in Hong Kong CR No. 1289039 and is an approved charitable institution under s88 of the Inland Revenue Ordinance, file no. 91/10272. PathFinders is listed on WiseGiving and is an organisation in Special Consultative Status with the United Nations Economic and Social Council since August 2017.

them about maternity protection for Foreign Domestic Workers. We have conducted 740 classes which had over 7,000 attendees, equipping them with critical knowledge about reproductive health and child development.

During 2017 we welcomed Meena Datwani and Martine Vanasse as board directors, and Poh Lee Tan and Jennifer Walke Meehan retired from the board.

CORE SERVICES

Social Welfare, Shelter and Supplies

Background: The welfare and subsidised healthcare system in Hong Kong provides world-class care to Hong Kong residents. Unfortunately, children born with a ‘residency-in-doubt’ status are excluded and become the most vulnerable and helpless children in Hong Kong.

Objective: We help these vulnerable children by intervening as early as possible, often when they are still in the womb. By supporting the mother, we help the child find a dignified path in life.

Content of Services: By:

- C** Counseling the family,
- A** Advising on all available options,
- R** Resources, tangible and intangible resources,
- E** Empower the family to develop a permanency plan, we **CARE!**

Number of Participants:

- 1,041 persons assisted through casework or hotline
- 64 Children received Birth Certificates
- We accompanied 22 women with a visa overstay to immigration
- A total of 41 residents stayed in our shelter, on average for 40 days
- PathFinders distributed 11,454 supplies items to 454 people

Access to Healthcare

Background: Foreign domestic workers who are illegally fired or forced to resign because they are pregnant, lose access to all public healthcare in Hong Kong within two weeks of their employment terminating. This group of mothers and their babies are desperately in need of healthcare, health system navigation and health education.

Objective: PathFinders’ Health Care Team provides access to vital medical services and bridges healthcare and service gaps. We endeavour to detect and prevent pregnancy complications, to promote a safe pregnancy and childbirth and to provide baby care information.

Content of Services:

1. Providing pre/postnatal care and advice for migrant mothers
2. Facilitating access to medical services by partnering with pro bono doctors and clinics
3. Conducting home-based check-ups post-delivery, to support new mothers and their babies
4. Educating mothers through workshops and one-on-one counselling
5. Accompanying women to receive family planning advice and contraceptives

Number of Participants:

- PathFinders provided access to 763 healthcare interventions
- Accompanied women and babies to public hospitals and Maternal and Child health centre 31 times and 111 times to pro bono doctors

- PathFinders' Health Centre had a total of 374 checkups of mother and babies
- Performed 112 postnatal home visits
- 64 women went to the Family Planning Association together with PathFinders staff for contraceptives
- Matilda International Hospital started providing maternal care free-of-charge to PathFinders' pregnant clients who were ineligible for public healthcare services
- Child Development Centre Hong Kong (CDC) have been coming to PathFinders monthly to conduct child developmental screening and have referred children with developmental delays for follow-up by CDC. 38 children received a developmental screening by CDC in 2017

Access to Justice

Background: Foreign Domestic Workers often struggle to understand and enforce their legal rights in Hong Kong. Language, culture, lack of knowledge about their legal rights and lack of access to the justice system will act as barriers to mothers and their children. Employed women are entitled to maternity protections for their children born in Hong Kong.

Objective: PathFinders' legal team ensures that vulnerable babies, children and women receive quality legal advice in a language they understand. We bridge a significant Access to Justice gap by identifying legal issues, finding lawyers to help and then supporting the women and children through the legal process and when appearing at government departments, in courts and tribunals.

Content of Services:

1. Collaborating with internal social work and medical teams as well as external NGOs to ensure a holistic assessment of mother and children's needs
2. Identifying and documenting legal cases
3. Partnering with pro-bono and legal aid lawyers as well as other experts to pursue claims
4. Assisting and accompanying clients to navigate the justice system
5. Educating mothers and children about their legal rights and obligations
6. Developing the next generation of public interest lawyers through our internship programme

Number of Participants:

- Partner with 90 Lawyers, 13 Interns from the University of Hong Kong, the Chinese University of Hong Kong, Columbia Law School, University of Cambridge and 5 Volunteers

Community Outreach & Education

Background: Foreign domestic workers emigrate from developing nations with little to no education about reproductive health, rights and services. Education classes are critically needed by this population. We educate women and mothers about their health, rights and responsibilities, providing knowledge to enable them to make informed decisions about their lives and the well-being of their children.

Objective: PathFinders' outreach and education teams provide and increase the women's knowledge and understanding of reproductive health and related topics. This leads to heightened awareness of, and increased knowledge about the maternity rights of migrant workers, as well as the rights of vulnerable children. We also educate the broader community of migrant workers, their employers, agencies, as well as government, legislative, consular and statutory bodies. The programme is focused on prevention and raising awareness in the public.

Content of Services:

1. Running pregnancy awareness and prevention workshops for migrant workers and employers;
2. Hosting booths in parks and public gathering spaces to disseminate education and prevention information;
3. Developing community services and local support mechanisms for our mothers and children during the first fragile months after they return to their home country;
4. Organising home return preparation workshops for beneficiaries, arranging flights and making referrals to local support network as appropriate to meet their needs;
5. Collaborating with consulates, policy makers, academics and schools, NGOs, international agencies and governments to identify and address systemic gaps and root causes giving rise to the extreme vulnerabilities of the women and children we help.

Number of Participants:

- Reached 12,741 people over 56 activities - a huge number ensure empowerment of this social problem
- Held 145 educational classes for 1,034 attendees

Home Country Integration Programme (HCIP)

Background: PathFinders conducts classes in Hong Kong for those mothers wishing to return to their home country to ensure they are prepared to return and adjust well once there by:

Objectives:

- Educating clients with accurate information to anticipate the challenges they can expect to face in their country of origin;
- Teaching the migrant mothers about resilience, confidence and also the social skills they will need to handle the social pressure and difficulties they will face; and
- Preparing the mothers' psychosocial wellbeing, coping with anticipating challenges and gaining mutual support.

Content of Services:

- PathFinders warm-refers clients returning home to in-country NGOs and government services for:
 1. Humanitarian Supplies (food, clothing) & Shelter
 2. Counselling & Healthcare
Childcare & Adoption services
 3. Vocational Skills Training
 4. Flight Tickets & Documentation (Doctor certificate, Birth Certificate from consulate)

Number of Participants:

- Assisted 37 families in returning to their home countries

FINANCES

PathFinders' financial year runs from 1 January through 31 December. Please refer here to our 2017 audited [Annual Accounts/Financial Statements](#) on our website. Audited annual accounts/financial statements are also available at our centre. Appointments to review these can be made by calling (852) 5500 5486. A collated, brief summary of our annual financial headlines from 2013-2017 follows below:

HK\$		2013	2014	2015	2016	2017
Income	Donations					
	Corporate	1,226,527	1,445,869	1,386,940	1,664,366	2,193,389
	Foundations/Grants	1,017,000	1,121,141	1,318,736	1,886,328	2,841,462
	Individuals	2,033,785	1,496,856	1,196,007	630,685	1,329,684
	Events	970,512	1,704,931	2,784,136	2,060,510	1,406,743
	TOTAL INCOME	5,247,824	5,768,797	6,685,818	6,241,889	7,771,278
Expenditure						
	Client Programmes:					
	Social Welfare	1,352,583	1,724,636	1,784,656	2,243,018	2,107,826
	Education	569,464	610,716	698,384	436,528	415,241
	Community Development	-	-	228,254	438,030	330,631
	Home Country Integration	-	63,783	340,792	265,295	246,572
	Shelter	478,540	596,516	585,819	618,471	463,673
	Access to Justice/CO	180,094	506,512	999,276	770,234	1,464,330
	Access to Healthcare	-	-	84,556	429,313	1,011,976
	Supplies/Volunteers	231,845	248,231	249,161	237,802	256,433
	TOTAL CLIENT PROGRAMMES	2,812,527	3,750,394	4,970,896	5,438,690	6,296,682
	Business Programmes:					
	Operations	624,966	514,520	839,163	1,111,041	1,529,570
	Office Safety Renovations	-	241,141	107,362	-	-
	TOTAL EXPENSES	3,437,493	4,506,055	5,917,421	6,549,731	7,826,252
	Surplus for year	1,810,331	1,262,742	768,397	-307,842	-54,974
	General Fund brought forward	1,172,602	2,892,933	4,245,675	5,014,072	4,706,230
	General fund carried forward	2,982,933	4,245,675	5,014,072	4,706,230	4,651,256

SIGNATURE PAGE FOLLOWS

PathFinders ensures that the most vulnerable children in Hong Kong, and their migrant mothers, are respected and protected. We work to ensure that every child has a fair start in life. PathFinders Limited is incorporated in Hong Kong CR No. 1289039 and is an approved charitable institution under s88 of the Inland Revenue Ordinance, file no. 91/10272. PathFinders is listed on WiseGiving and is an organisation in Special Consultative Status with the United Nations Economic and Social Council since August 2017.

機構主管姓名 Head of Organization	Kay McArdle	
機構名稱 Name of Organization	PathFinders Limited 融幼社	
職位 Position	CEO 行政總裁	 機構印章 Organisation Chop
簽署 Signature		
日期 Date	21 December 2018	